

Geography Learning Journey

EYFS



Nursery

In Nursery, you will talk about and represent, maybe through modelling or drawing, places that are familiar to you. You will talk about where things are around you. You will start to investigate the outdoors in different seasons. You start to think about what maps are used for.

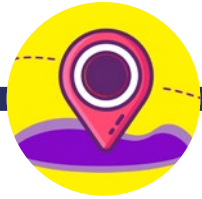


Reception

You will start to use geographical vocabulary, like near and far. You will start to use and draw simple maps of your classroom and playground. You will talk about where you live and the different landmarks that you know. You'll hear some stories about different countries and cultures. You'll spend time watching the seasons change, recording simply what you have found out.

Geography Learning Journey

Key Stage 1



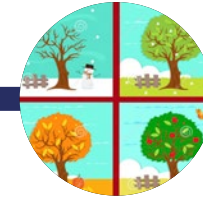
Our locality

You will investigate the locality around your school, discovering what human and physical features are present. You'll use and create maps to find your way around your classroom, school and locality.



Regional geography

You will investigate the geography of our region, focusing on where our school is in relation to key human and physical features. You'll discover what landmarks are present and the role they play in the local area.



The seasons

Throughout the year, you will observe and learn about the seasons and they affect our weather, the plant life and how live. You'll spend time outside exploring and recording the changes.

Year
1

Geography Learning Journey

Key Stage 1



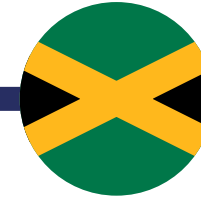
The UK and British Isles

In this unit, you will learn about The United Kingdom, including its four countries and four capital cities. You will discover what seas are around the British Isles, and what makes up this group of islands.



Continents and oceans

You will learn about the world's seven continents and five oceans. You'll discover where the planet's hot and cold places are. Atlases, globes and maps will help you to achieve this.



Comparative study: Jamaica - Montego Bay

You will learn about a region in Jamaica, finding out what life is like and what physical features you would find. You'll compare this with our own locality, finding the similarities and differences.

Year
2

Geography Learning Journey

Key Stage 2



The UK topography

You will begin looking at The UK in more depth. In this unit, you will locate and identify some of its key physical features, from mountains and lakes, to rivers and islands.



The UK

In this unit, you will find out about the UK's countries and key cities. You will identify and locate its key geographical regions and counties. You'll identify features of some of these cities, counties and regions.



European Mapping

You'll use geographical resources to locate and map the continents countries and cities. You will discover where some the key physical features are located.

Year
3

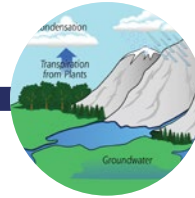
Geography Learning Journey

Key Stage 2



Rivers

You will learn about the world's great rivers, discovering how rivers are formed and their different features. You'll find out about the positives and negatives of living near a river.



The water cycle

You will find out about the water cycle and why it is central to all life on Earth. You will discover how the planet stores, cleans and recycles water. You will find out what keeps this essential cycle going!



Comparative study: Mapping of Europe

You will learn about a region in Europe, discovering its human and physical features. You will identify the similarities and differences between this region and that of our own.

Year
4

Geography Learning Journey

Key Stage 2



Global mapping

You will use atlases and maps to discover the countries and major cities of the world. You'll find out about the planet's hemispheres, natural resources and lines of longitude and latitude.



Biomes

You will learn about the world's great biomes, discovering what makes a biome and where they are. You will also find out about the human impact on these huge geographical features.

Year
5



Time zones

Year 5 will end with a short study on the planet's time zones and why we have them – you will use your knowledge from the global mapping unit to help you understand.



Volcanoes and earthquakes

You will learn about the structure of Earth and how its tectonic plates contribute to volcano formation and earthquakes. You'll also discover why humans chose to live next to volcanoes.

Geography Learning Journey

Key Stage 2



Mountains

You will go on an adventure to find out where some of the world's largest mountain ranges are, while discovering how some mountains are created. You will also find out how humans use mountains and what impact they have on them.



Comparative study: Costa Rica

You will learn about a region within Costa Rica, exploring its human and physical features. You'll discover what its climate is like and what life is like for its people. You'll compare and contrast this region to that of our own.

Year
6