

Art and Design Learning Journey

EYFS



Nursery

You will explore different materials freely and will develop your ideas about how to use them and what to make, working at different scales and on a range of surfaces. You will create closed shapes with continuous lines and being to use these shapes to represent objects. You will add detail to your drawings, such as a face, and will try to show different emotions (happiness, sadness, fear etc).

You will also explore colour and colour mixing.



Reception

You will explore, use and refine a variety of artistic effects to express ideas and feelings. You will develop colour-mixing techniques to enable you to match colours to what you can see and want to represent. You will work on your own, as well as collaboratively, using a range of materials and techniques.

Art and Design Learning Journey

Key Stage 1



Self portraits

In this unit, you will get to create your very own self-portrait! You will use mirrors or photographs to explore the shapes on your own face and use line and space to draw them, to create a picture that looks like you!



Printing

Here you will explore the colour wheel, and you will mix the primary colours (yellow, blue and red) to create many more exciting colours. You will then use different shapes to print and create patterns.



Seasonal tiling

From the seasonal walks you have been taking part in, you will have collected lots of pictures and items that will show what each season is like in the world around us. You will use these as a starting point for your work, where you will create a clay tile, with seasonal images imprinted into it.

Year
1

Art and Design Learning Journey

Key Stage 1



Still life

Building on your line and shape work from Year 1, you will now draw a picture of real-life objects. You will make it look as realistic as you can by using different pencil grades to add different types of shade.



My favourite place

In this exciting unit, you will use your imagination to create a picture of your favourite place. You will use brushes of different sizes, as well as your knowledge of the colour wheel, to explore different effects you can make using paint.

Year
2

Art and Design Learning Journey

Key Stage 2



The human figure

Now that you are able to draw pictures, using line, shape and shading, you will now consider proportion when drawing the human figure. What actions can you make your figures show?



Pop art

In this unit, you will explore the work of famous Pop artists, such as Andy Warhol, and how they used different types of paint to create striking effects. You will explore complementary and contrasting colours to create your own Pop Art style painting.



Romantic period

Building on the human figure work you did earlier on in the year, you will now explore the work of artists from the Romantic period as inspiration, to join and shape clay, creating your own sculpture.

Year
3

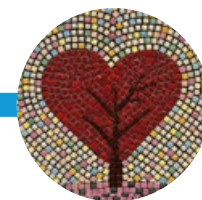
Art and Design Learning Journey

Key Stage 2



Landscapes

In this unit, we will be using collage to create a piece of art based on landscapes. You will represent the landscape, using a range of sustainable materials, creating texture through a range of collage techniques.



Mosaics

Here you will explore the stunning architecture of Gaudi, and create a mosaic, using his work as inspiration. You will explore pattern, colour and different joining techniques.

Year
4

Art and Design Learning Journey

Key Stage 2



Print: William Morris

You will compare the work of modern-day print designers, such as Laura Ashley, and compare their approaches to William Morris. You will create patterns using a range of materials and use a press print block to complete your design.



Drawing: Islamic art

In this unit, you will look at the use of geometric patterns in Islamic art, in particular its influence in architecture. You will then use these ideas as inspiration for your own Islamic art themed piece.

Year
5

Art and Design Learning Journey

Key Stage 2



Self portraits: Yayoi Kusama

You will explore the work of this unique artist and create a self-portrait using perspective, shading, tone, and colour to convey emotion.



Da Vinci: Mona Lisa

You will explore Leonardo Da Vinci's use of water colour throughout this unit to create a portrait using a variety of sketching techniques.



Sculpture: Greek pots

The ancient Greeks were known for their many achievements and, throughout this unit, you will look at their legacy in art through sculpting your very own Greek pot and using the pictures to tell a story.

Year
6